

Location: Mercer Island (510)

Property Types: Single Family Homes - All Property Statuses - All Properties - All Properties

Price Range: \$0 - No Limit

SQFT Range: 0 - No Limit

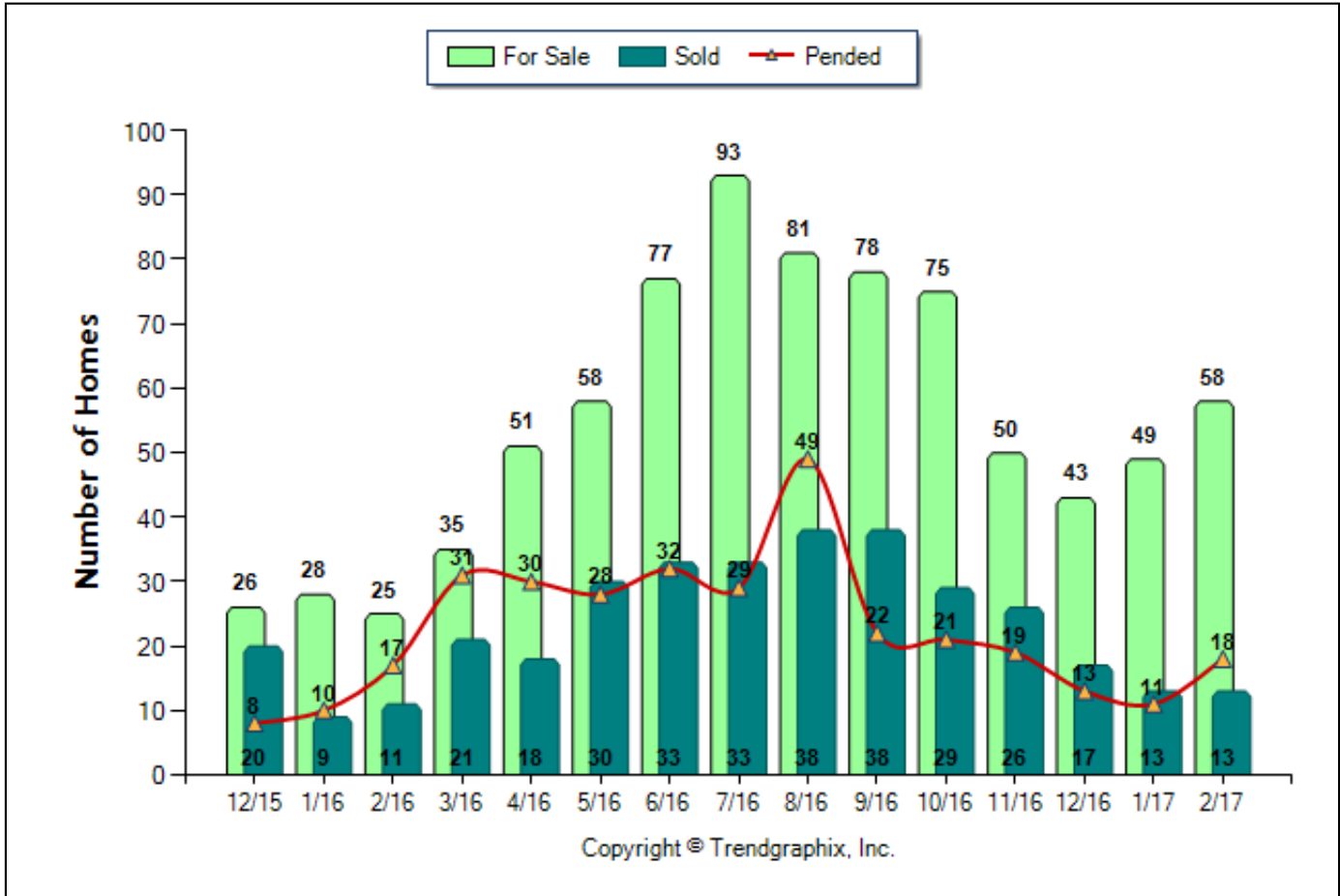
Bedrooms: 0 - No Limit

Full Baths: 0 - No Limit

Half Baths: 0 - No Limit

Year Built: 0 - No Limit

Number of Homes For Sale vs. Sold vs. Pended (Dec. 2015 - Feb. 2017)



	Curnt vs. Prev Month			Curnt vs. Same Month 1 Yr Ago			Curnt vs. Same Qtr 1 Yr Ago			TODAY STATS		
	Feb. 17	Jan. 17	% Change	Feb. 17	Feb. 16	% Change	Dec. 16 to Feb. 17	Dec. 15 to Feb. 16	% Change	3/1/2017 - 3/13/2017	2/1/2017 - 2/13/2017	% Change
For Sale	58	49	18.4% ▲	58	25	132% ▲	58	25	132% ▲	51	52	-1.9% ▼
Sold	13	13	0%	13	11	18.2% ▲	43	40	7.5% ▲	7	6	16.7% ▲
Pended	18	11	63.6% ▲	18	17	5.9% ▲	42	35	20% ▲	19	9	111.1% ▲

Date	12/15	1/16	2/16	3/16	4/16	5/16	6/16	7/16	8/16	9/16	10/16	11/16	12/16	1/17	2/17
For Sale	26	28	25	35	51	58	77	93	81	78	75	50	43	49	58
New Listing	7	20	16	42	50	44	61	59	50	30	30	11	10	31	28
Sold	20	9	11	21	18	30	33	33	38	38	29	26	17	13	13
Pended	8	10	17	31	30	28	32	29	49	22	21	19	13	11	18
Months of Inventory (Closed Sales)	1.3	3.1	2.3	1.7	2.8	1.9	2.3	2.8	2.1	2.1	2.6	1.9	2.5	3.8	4.5
Months of Inventory (Pended Sales)	3.3	2.8	1.5	1.1	1.7	2.1	2.4	3.2	1.7	3.5	3.6	2.6	3.3	4.5	3.2
Absorption Rate (Closed Sales) %	76.9	32.1	44	60	35.3	51.7	42.9	35.5	46.9	48.7	38.7	52	39.5	26.5	22.4
Absorption Rate (Pended Sales) %	30.8	35.7	68	88.6	58.8	48.3	41.6	31.2	60.5	28.2	28	38	30.2	22.4	31
Avg. Active Price	4946	4474	4771	4525	3983	3948	3458	3155	3376	3497	3747	4353	4615	4218	3898
Avg. Sold Price	1337	1849	1838	1577	1301	1814	1652	1795	1618	1579	1442	1753	1597	2193	2034
Avg. Sq. Ft. Price (Sold)	458	653	449	443	423	499	488	569	478	502	482	552	460	524	593
Sold/List Diff. %	98	95	98	101	103	99	100	99	100	96	98	98	99	96	96
Sold/Orig LP Diff. %	97	91	97	98	102	99	99	98	99	95	96	95	98	93	95
Days on Market	43	61	39	47	17	13	27	26	21	28	33	32	41	61	68
Avg CDOM	52	60	39	49	26	23	18	28	34	43	38	52	51	70	65
Median	1125	995	1958	1580	1255	1558	1465	1270	1513	1234	1330	1275	1399	1758	1310

All reports are published March 2017, based on data available at the end of February 2017, except for the today stats. This representation is based in whole or in part on data supplied by the NWMLS. Neither the Board or its MLS guarantees or is in any way responsible for its accuracy. Data maintained by the Board or its MLS may not reflect all real estate activity in the market. Report reflects activity by all brokers participated in the MLS.

Location: Mercer Island (510)

Property Types: Single Family Homes - All Property Statuses - All Properties - All Properties

Price Range: \$0 - No Limit

SQFT Range: 0 - No Limit

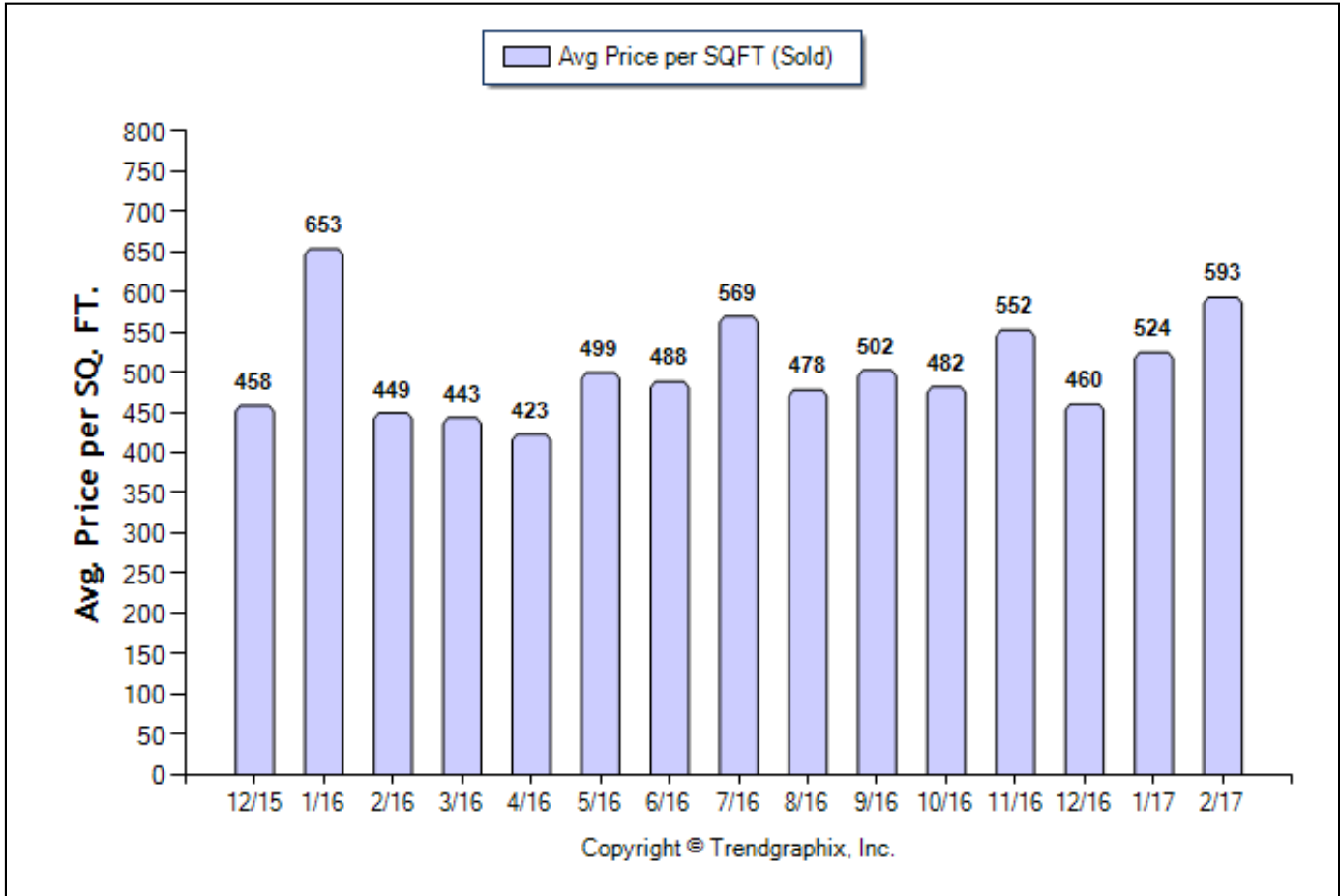
Bedrooms: 0 - No Limit

Full Baths: 0 - No Limit

Half Baths: 0 - No Limit

Year Built: 0 - No Limit

Average Price per SQFT (Sold) (Dec. 2015 - Feb. 2017)



	Curnt vs. Prev Month			Curnt vs. Same Month 1 Yr Ago			Curnt vs. Same Qtr 1 Yr Ago			TODAY STATS		
	Feb. 17	Jan. 17	% Change	Feb. 17	Feb. 16	% Change	Dec. 16 to Feb. 17	Dec. 15 to Feb. 16	% Change	3/1/2017 - 3/13/2017	2/1/2017 - 2/13/2017	% Change
Avg. Sq. Ft. Price (Sold)	593	524	13.2% ▲	593	449	32.1% ▲	519.56	499.4	4%	692	450	53.8% ▲

Date	12/15	1/16	2/16	3/16	4/16	5/16	6/16	7/16	8/16	9/16	10/16	11/16	12/16	1/17	2/17
For Sale	26	28	25	35	51	58	77	93	81	78	75	50	43	49	58
New Listing	7	20	16	42	50	44	61	59	50	30	30	11	10	31	28
Sold	20	9	11	21	18	30	33	33	38	38	29	26	17	13	13
Pended	8	10	17	31	30	28	32	29	49	22	21	19	13	11	18
Months of Inventory (Closed Sales)	1.3	3.1	2.3	1.7	2.8	1.9	2.3	2.8	2.1	2.1	2.6	1.9	2.5	3.8	4.5
Months of Inventory (Pended Sales)	3.3	2.8	1.5	1.1	1.7	2.1	2.4	3.2	1.7	3.5	3.6	2.6	3.3	4.5	3.2
Absorption Rate (Closed Sales) %	76.9	32.1	44	60	35.3	51.7	42.9	35.5	46.9	48.7	38.7	52	39.5	26.5	22.4
Absorption Rate (Pended Sales) %	30.8	35.7	68	88.6	58.8	48.3	41.6	31.2	60.5	28.2	28	38	30.2	22.4	31
Avg. Active Price	4946	4474	4771	4525	3983	3948	3458	3155	3376	3497	3747	4353	4615	4218	3898
Avg. Sold Price	1337	1849	1838	1577	1301	1814	1652	1795	1618	1579	1442	1753	1597	2193	2034
Avg. Sq. Ft. Price (Sold)	458	653	449	443	423	499	488	569	478	502	482	552	460	524	593
Sold/List Diff. %	98	95	98	101	103	99	100	99	100	96	98	98	99	96	96
Sold/Orig LP Diff. %	97	91	97	98	102	99	99	98	99	95	96	95	98	93	95
Days on Market	43	61	39	47	17	13	27	26	21	28	33	32	41	61	68
Avg CDOM	52	60	39	49	26	23	18	28	34	43	38	52	51	70	65
Median	1125	995	1958	1580	1255	1558	1465	1270	1513	1234	1330	1275	1399	1758	1310

All reports are published March 2017, based on data available at the end of February 2017, except for the today stats. This representation is based in whole or in part on data supplied by the NWMLS. Neither the Board or its MLS guarantees or is in any way responsible for its accuracy. Data maintained by the Board or its MLS may not reflect all real estate activity in the market. Report reflects activity by all brokers participated in the MLS.

Location: Mercer Island (510)

Property Types: Single Family Homes - All Property Statuses - All Properties - All Properties

Price Range: \$0 - No Limit

SQFT Range: 0 - No Limit

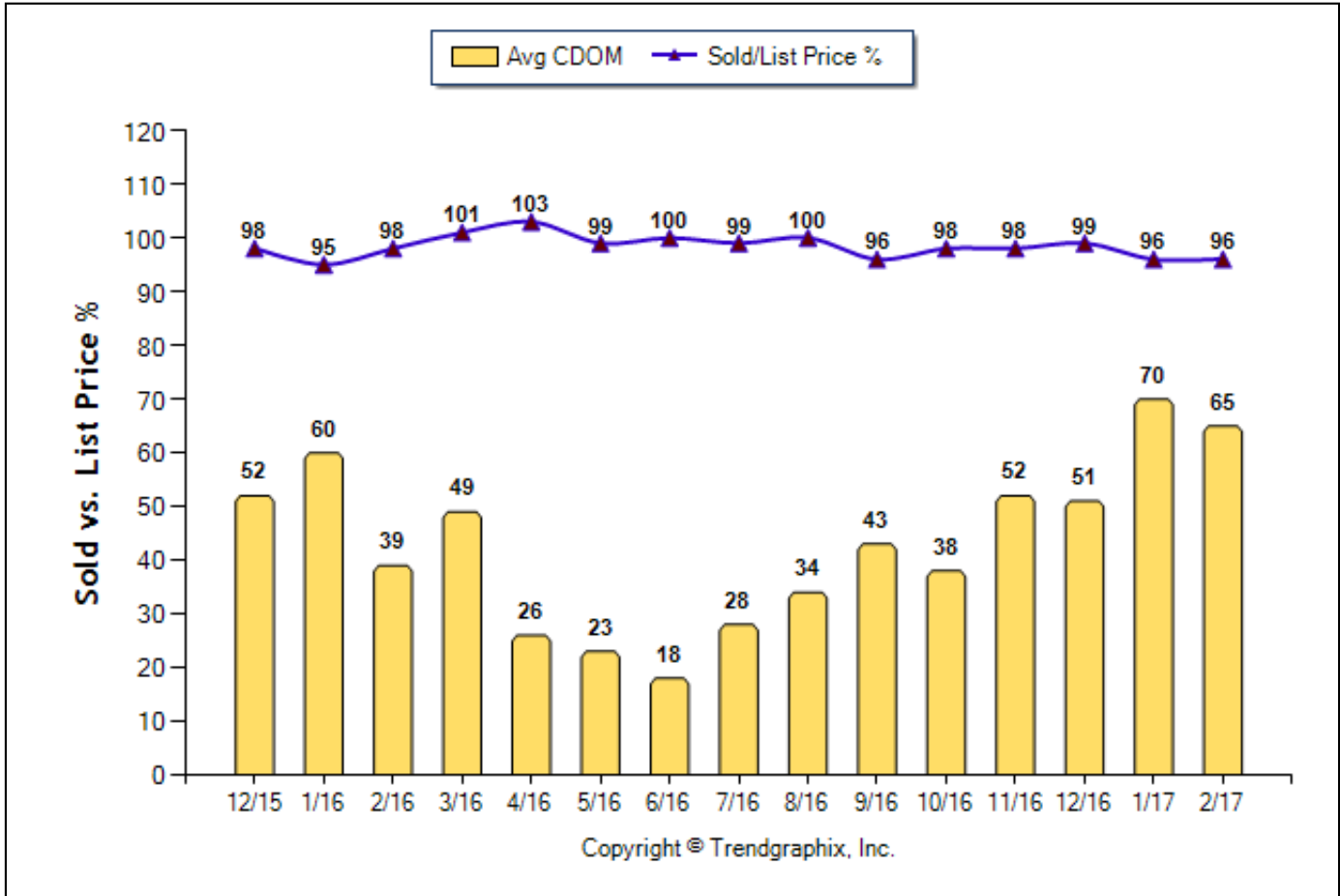
Bedrooms: 0 - No Limit

Full Baths: 0 - No Limit

Half Baths: 0 - No Limit

Year Built: 0 - No Limit

Avg CDOM & Sold/List Price % (Dec. 2015 - Feb. 2017)



	Curnt vs. Prev Month			Curnt vs. Same Month 1 Yr Ago			Curnt vs. Same Qtr 1 Yr Ago			TODAY STATS		
	Feb. 17	Jan. 17	% Change	Feb. 17	Feb. 16	% Change	Dec. 16 to Feb. 17	Dec. 15 to Feb. 16	% Change	3/1/2017 - 3/13/2017	2/1/2017 - 2/13/2017	% Change
Avg CDOM	65	70	-7.1% ▼	65	39	66.7% ▲	61	50	22% ▲	37	69	-46.4% ▼
Sold/List Diff. %	96	96	0%	96	98	-2% ▼	97	97	0%	101	101	0%

Date	12/15	1/16	2/16	3/16	4/16	5/16	6/16	7/16	8/16	9/16	10/16	11/16	12/16	1/17	2/17
For Sale	26	28	25	35	51	58	77	93	81	78	75	50	43	49	58
New Listing	7	20	16	42	50	44	61	59	50	30	30	11	10	31	28
Sold	20	9	11	21	18	30	33	33	38	38	29	26	17	13	13
Pended	8	10	17	31	30	28	32	29	49	22	21	19	13	11	18
Months of Inventory (Closed Sales)	1.3	3.1	2.3	1.7	2.8	1.9	2.3	2.8	2.1	2.1	2.6	1.9	2.5	3.8	4.5
Months of Inventory (Pended Sales)	3.3	2.8	1.5	1.1	1.7	2.1	2.4	3.2	1.7	3.5	3.6	2.6	3.3	4.5	3.2
Absorption Rate (Closed Sales) %	76.9	32.1	44	60	35.3	51.7	42.9	35.5	46.9	48.7	38.7	52	39.5	26.5	22.4
Absorption Rate (Pended Sales) %	30.8	35.7	68	88.6	58.8	48.3	41.6	31.2	60.5	28.2	28	38	30.2	22.4	31
Avg. Active Price	4946	4474	4771	4525	3983	3948	3458	3155	3376	3497	3747	4353	4615	4218	3898
Avg. Sold Price	1337	1849	1838	1577	1301	1814	1652	1795	1618	1579	1442	1753	1597	2193	2034
Avg. Sq. Ft. Price (Sold)	458	653	449	443	423	499	488	569	478	502	482	552	460	524	593
Sold/List Diff. %	98	95	98	101	103	99	100	99	100	96	98	98	99	96	96
Sold/Orig LP Diff. %	97	91	97	98	102	99	99	98	99	95	96	95	98	93	95
Days on Market	43	61	39	47	17	13	27	26	21	28	33	32	41	61	68
Avg CDOM	52	60	39	49	26	23	18	28	34	43	38	52	51	70	65
Median	1125	995	1958	1580	1255	1558	1465	1270	1513	1234	1330	1275	1399	1758	1310

All reports are published March 2017, based on data available at the end of February 2017, except for the today stats. This representation is based in whole or in part on data supplied by the NWMLS. Neither the Board or its MLS guarantees or is in any way responsible for its accuracy. Data maintained by the Board or its MLS may not reflect all real estate activity in the market. Report reflects activity by all brokers participated in the MLS.

Location: Mercer Island (510)

Property Types: Single Family Homes - All Property Statuses - All Properties - All Properties

Price Range: \$0 - No Limit

SQFT Range: 0 - No Limit

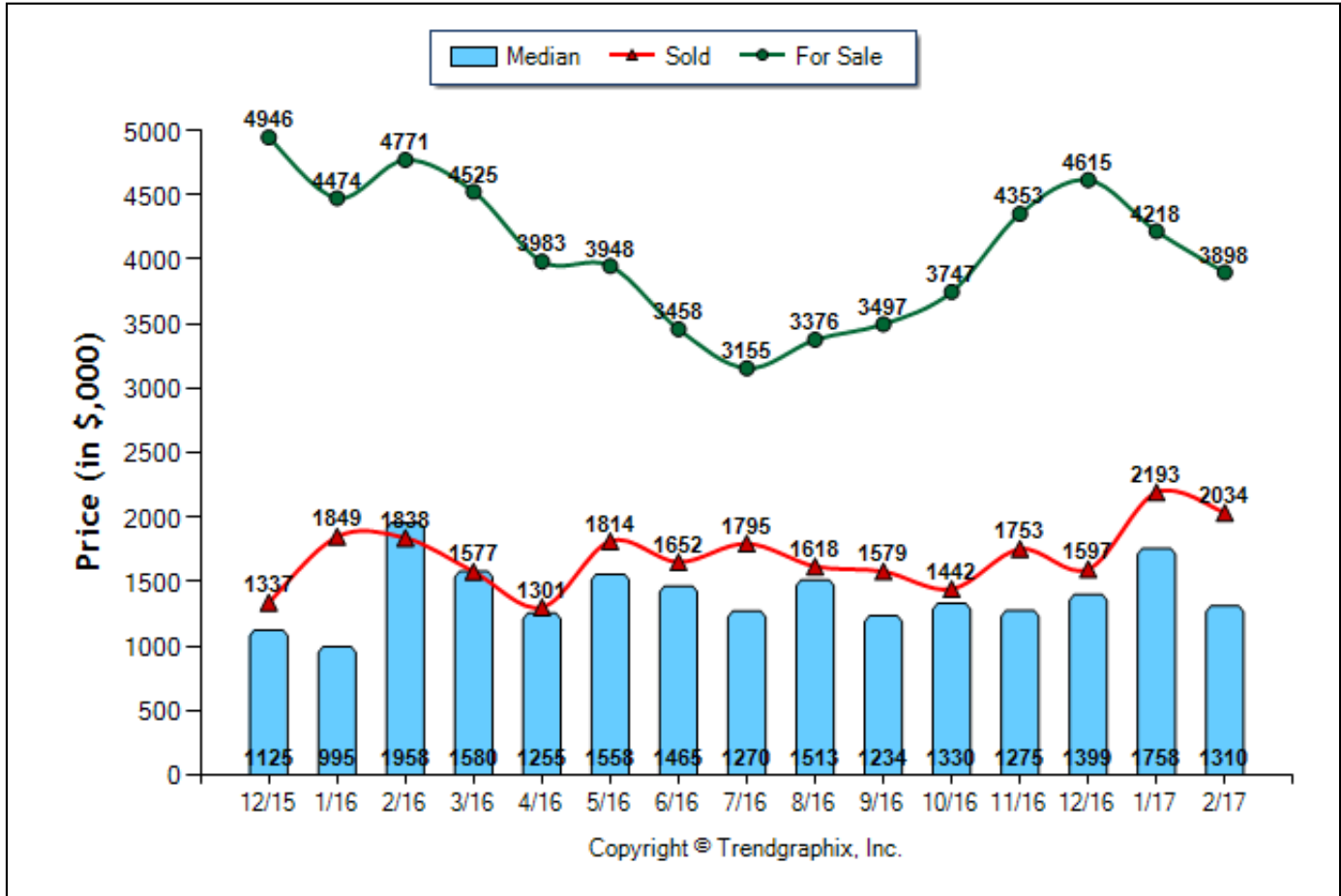
Bedrooms: 0 - No Limit

Full Baths: 0 - No Limit

Half Baths: 0 - No Limit

Year Built: 0 - No Limit

Avg Prices & Median Price (Dec. 2015 - Feb. 2017)



	Curnt vs. Prev Month			Curnt vs. Same Month 1 Yr Ago			Curnt vs. Same Qtr 1 Yr Ago			TODAY STATS		
	Feb. 17	Jan. 17	% Change	Feb. 17	Feb. 16	% Change	Dec. 16 to Feb. 17	Dec. 15 to Feb. 16	% Change	3/1/2017 - 3/13/2017	2/1/2017 - 2/13/2017	% Change
Median	1310	1758	-25.5% ▼	1310	1958	-33.1% ▼	1360	1163	16.9% ▲	1535	1175	30.6% ▲
Avg. Active Price	3898	4218	-7.6% ▼	3898	4771	-18.3% ▼	4208	4723	-10.9% ▼	3971	4176	-4.9% ▼
Avg. Sold Price	2034	2193	-7.3% ▼	2034	1838	10.7% ▲	1909	1590	20.1% ▲	2001	1305	53.3% ▲

Date	12/15	1/16	2/16	3/16	4/16	5/16	6/16	7/16	8/16	9/16	10/16	11/16	12/16	1/17	2/17
For Sale	26	28	25	35	51	58	77	93	81	78	75	50	43	49	58
New Listing	7	20	16	42	50	44	61	59	50	30	30	11	10	31	28
Sold	20	9	11	21	18	30	33	33	38	38	29	26	17	13	13
Pended	8	10	17	31	30	28	32	29	49	22	21	19	13	11	18
Months of Inventory (Closed Sales)	1.3	3.1	2.3	1.7	2.8	1.9	2.3	2.8	2.1	2.1	2.6	1.9	2.5	3.8	4.5
Months of Inventory (Pended Sales)	3.3	2.8	1.5	1.1	1.7	2.1	2.4	3.2	1.7	3.5	3.6	2.6	3.3	4.5	3.2
Absorption Rate (Closed Sales) %	76.9	32.1	44	60	35.3	51.7	42.9	35.5	46.9	48.7	38.7	52	39.5	26.5	22.4
Absorption Rate (Pended Sales) %	30.8	35.7	68	88.6	58.8	48.3	41.6	31.2	60.5	28.2	28	38	30.2	22.4	31
Avg. Active Price	4946	4474	4771	4525	3983	3948	3458	3155	3376	3497	3747	4353	4615	4218	3898
Avg. Sold Price	1337	1849	1838	1577	1301	1814	1652	1795	1618	1579	1442	1753	1597	2193	2034
Avg. Sq. Ft. Price (Sold)	458	653	449	443	423	499	488	569	478	502	482	552	460	524	593
Sold/List Diff. %	98	95	98	101	103	99	100	99	100	96	98	98	99	96	96
Sold/Orig LP Diff. %	97	91	97	98	102	99	99	98	99	95	96	95	98	93	95
Days on Market	43	61	39	47	17	13	27	26	21	28	33	32	41	61	68
Avg CDOM	52	60	39	49	26	23	18	28	34	43	38	52	51	70	65
Median	1125	995	1958	1580	1255	1558	1465	1270	1513	1234	1330	1275	1399	1758	1310

All reports are published March 2017, based on data available at the end of February 2017, except for the today stats. This representation is based in whole or in part on data supplied by the NWMLS. Neither the Board or its MLS guarantees or is in any way responsible for its accuracy. Data maintained by the Board or its MLS may not reflect all real estate activity in the market. Report reflects activity by all brokers participated in the MLS.

Location: Mercer Island (510)

Property Types: Single Family Homes - All Property Statuses - All Properties - All Properties

Price Range: \$0 - No Limit

SQFT Range: 0 - No Limit

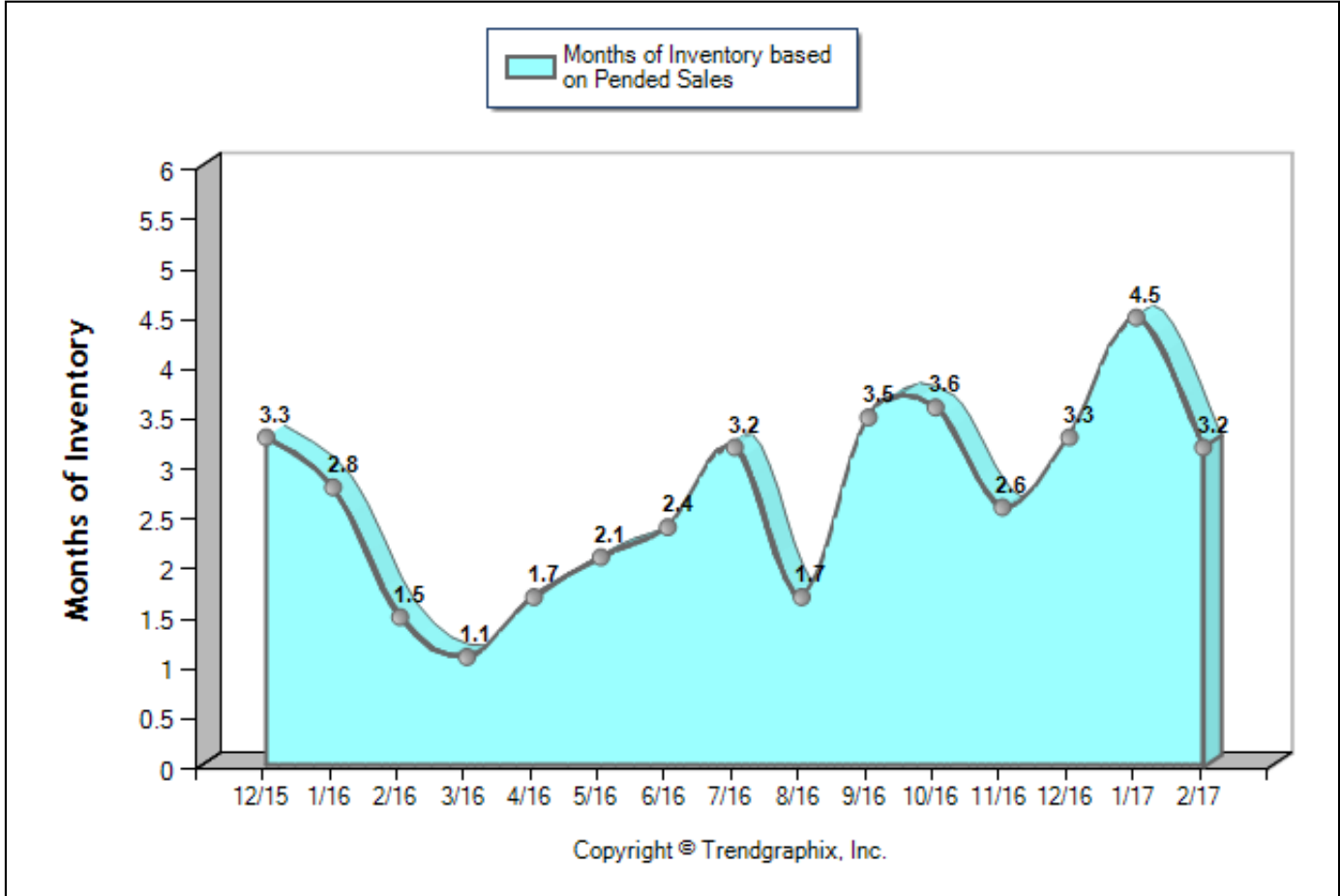
Bedrooms: 0 - No Limit

Full Baths: 0 - No Limit

Half Baths: 0 - No Limit

Year Built: 0 - No Limit

Months of Inventory Based on Pended Sales (Dec. 2015 - Feb. 2017)



	Curnt vs. Prev Month			Curnt vs. Same Month 1 Yr Ago			Curnt vs. Same Qtr 1 Yr Ago			TODAY STATS		
	Feb. 17	Jan. 17	% Change	Feb. 17	Feb. 16	% Change	Dec. 16 to Feb. 17	Dec. 15 to Feb. 16	% Change	3/1/2017 - 3/13/2017	2/1/2017 - 2/13/2017	% Change
Months of Inventory (Pended Sales)	3.2	4.5	-29.2% ▼	3.2	1.5	115.6% ▲	3.7	2.5	47.9% ▲	2.7	5.8	-53.7% ▼

Date	12/15	1/16	2/16	3/16	4/16	5/16	6/16	7/16	8/16	9/16	10/16	11/16	12/16	1/17	2/17
For Sale	26	28	25	35	51	58	77	93	81	78	75	50	43	49	58
New Listing	7	20	16	42	50	44	61	59	50	30	30	11	10	31	28
Sold	20	9	11	21	18	30	33	33	38	38	29	26	17	13	13
Pended	8	10	17	31	30	28	32	29	49	22	21	19	13	11	18
Months of Inventory (Closed Sales)	1.3	3.1	2.3	1.7	2.8	1.9	2.3	2.8	2.1	2.1	2.6	1.9	2.5	3.8	4.5
Months of Inventory (Pended Sales)	3.3	2.8	1.5	1.1	1.7	2.1	2.4	3.2	1.7	3.5	3.6	2.6	3.3	4.5	3.2
Absorption Rate (Closed Sales) %	76.9	32.1	44	60	35.3	51.7	42.9	35.5	46.9	48.7	38.7	52	39.5	26.5	22.4
Absorption Rate (Pended Sales) %	30.8	35.7	68	88.6	58.8	48.3	41.6	31.2	60.5	28.2	28	38	30.2	22.4	31
Avg. Active Price	4946	4474	4771	4525	3983	3948	3458	3155	3376	3497	3747	4353	4615	4218	3898
Avg. Sold Price	1337	1849	1838	1577	1301	1814	1652	1795	1618	1579	1442	1753	1597	2193	2034
Avg. Sq. Ft. Price (Sold)	458	653	449	443	423	499	488	569	478	502	482	552	460	524	593
Sold/List Diff. %	98	95	98	101	103	99	100	99	100	96	98	98	99	96	96
Sold/Orig LP Diff. %	97	91	97	98	102	99	99	98	99	95	96	95	98	93	95
Days on Market	43	61	39	47	17	13	27	26	21	28	33	32	41	61	68
Avg CDOM	52	60	39	49	26	23	18	28	34	43	38	52	51	70	65
Median	1125	995	1958	1580	1255	1558	1465	1270	1513	1234	1330	1275	1399	1758	1310

All reports are published March 2017, based on data available at the end of February 2017, except for the today stats. This representation is based in whole or in part on data supplied by the NWMLS. Neither the Board or its MLS guarantees or is in any way responsible for its accuracy. Data maintained by the Board or its MLS may not reflect all real estate activity in the market. Report reflects activity by all brokers participated in the MLS.