

Location: KING COUNTY

Property Types: Single Family Homes - All Property Statuses - All Properties - All Properties

Price Range: \$0 - No Limit

SQFT Range: 0 - No Limit

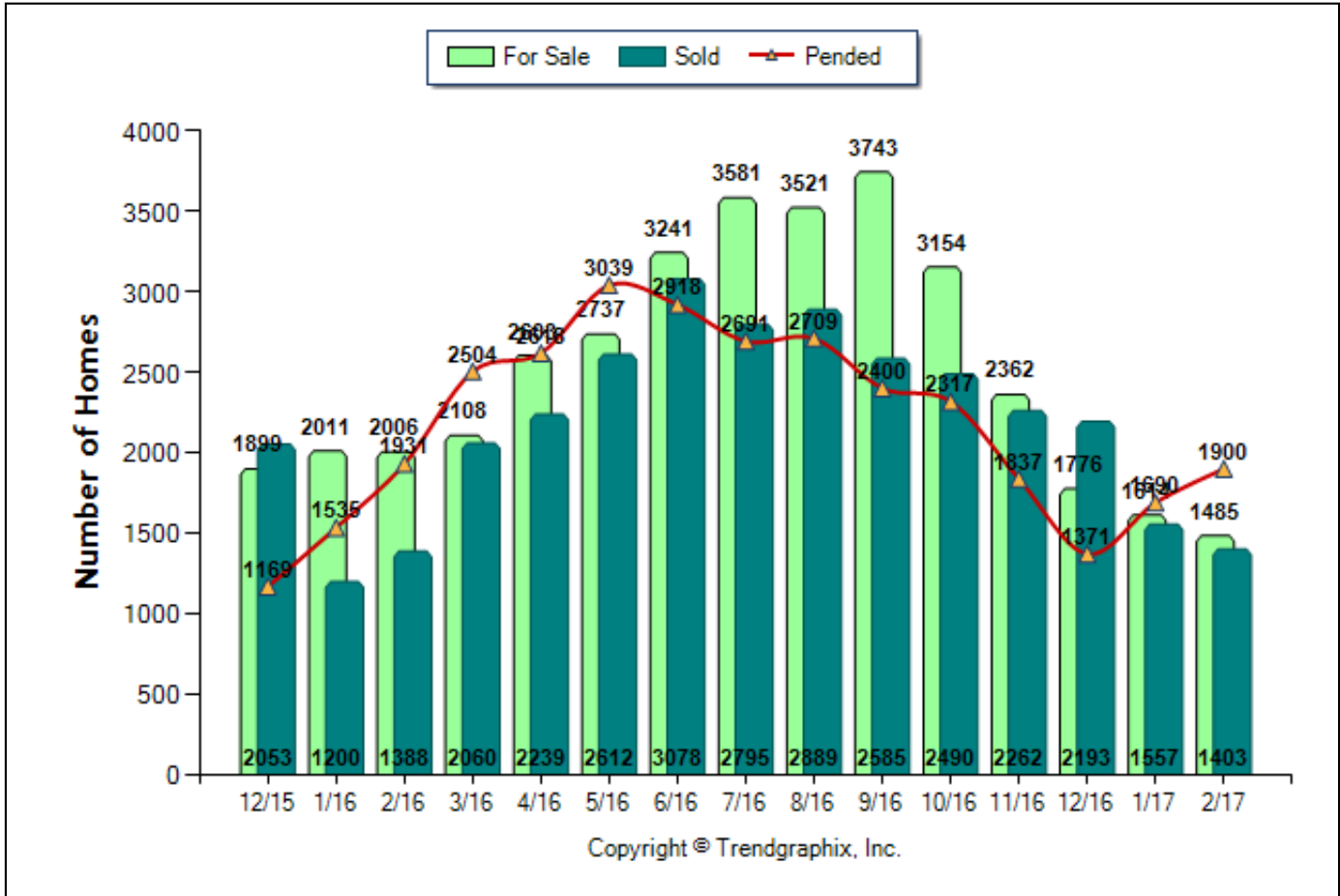
Bedrooms: 0 - No Limit

Full Baths: 0 - No Limit

Half Baths: 0 - No Limit

Year Built: 0 - No Limit

Number of Homes For Sale vs. Sold vs. Pended (Dec. 2015 - Feb. 2017)



| | Curnt vs. Prev Month | | | Curnt vs. Same Month 1 Yr Ago | | | Curnt vs. Same Qtr 1 Yr Ago | | | TODAY STATS | | |
|-----------------|----------------------|---------|----------|-------------------------------|---------|----------|-----------------------------|--------------------|----------|----------------------|----------------------|----------|
| | Feb. 17 | Jan. 17 | % Change | Feb. 17 | Feb. 16 | % Change | Dec. 16 to Feb. 17 | Dec. 15 to Feb. 16 | % Change | 3/1/2017 - 3/13/2017 | 2/1/2017 - 2/13/2017 | % Change |
| For Sale | 1485 | 1614 | -8% ▼ | 1485 | 2006 | -26% ▼ | 1485 | 2006 | -26% ▼ | 1583 | 1502 | 5.4% ▲ |
| Sold | 1403 | 1557 | -9.9% ▼ | 1403 | 1388 | 1.1% ▲ | 5153 | 4641 | 11% ▲ | 682 | 448 | 52.2% ▲ |
| Pended | 1900 | 1690 | 12.4% ▲ | 1900 | 1931 | -1.6% ▼ | 4961 | 4635 | 7% ▲ | 1020 | 842 | 21.1% ▲ |

| Date | 12/15 | 1/16 | 2/16 | 3/16 | 4/16 | 5/16 | 6/16 | 7/16 | 8/16 | 9/16 | 10/16 | 11/16 | 12/16 | 1/17 | 2/17 |
|---|-------|------|------|-------|-------|------|------|------|------|------|-------|-------|-------|-------|-------|
| For Sale | 1899 | 2011 | 2006 | 2108 | 2603 | 2737 | 3241 | 3581 | 3521 | 3743 | 3154 | 2362 | 1776 | 1614 | 1485 |
| New Listing | 1059 | 1871 | 2130 | 3033 | 3418 | 3555 | 3877 | 3577 | 3188 | 3229 | 2242 | 1582 | 1055 | 1784 | 1907 |
| Sold | 2053 | 1200 | 1388 | 2060 | 2239 | 2612 | 3078 | 2795 | 2889 | 2585 | 2490 | 2262 | 2193 | 1557 | 1403 |
| Pended | 1169 | 1535 | 1931 | 2504 | 2618 | 3039 | 2918 | 2691 | 2709 | 2400 | 2317 | 1837 | 1371 | 1690 | 1900 |
| Months of Inventory (Closed Sales) | 0.9 | 1.7 | 1.4 | 1 | 1.2 | 1 | 1.1 | 1.3 | 1.2 | 1.4 | 1.3 | 1 | 0.8 | 1 | 1.1 |
| Months of Inventory (Pended Sales) | 1.6 | 1.3 | 1 | 0.8 | 1 | 0.9 | 1.1 | 1.3 | 1.3 | 1.6 | 1.4 | 1.3 | 1.3 | 1 | 0.8 |
| Absorption Rate (Closed Sales) % | 108.1 | 59.7 | 69.2 | 97.7 | 86 | 95.4 | 95 | 78.1 | 82.1 | 69.1 | 78.9 | 95.8 | 123.5 | 96.5 | 94.5 |
| Absorption Rate (Pended Sales) % | 61.6 | 76.3 | 96.3 | 118.8 | 100.6 | 111 | 90 | 75.1 | 76.9 | 64.1 | 73.5 | 77.8 | 77.2 | 104.7 | 127.9 |
| Avg. Active Price | 984 | 1002 | 1049 | 1111 | 1057 | 1111 | 1074 | 1029 | 1016 | 1002 | 1035 | 1091 | 1148 | 1191 | 1291 |
| Avg. Sold Price | 599 | 601 | 621 | 638 | 640 | 668 | 669 | 676 | 656 | 645 | 665 | 664 | 656 | 647 | 694 |
| Avg. Sq. Ft. Price (Sold) | 260 | 267 | 272 | 281 | 286 | 295 | 293 | 301 | 291 | 290 | 293 | 295 | 286 | 291 | 304 |
| Sold/List Diff. % | 100 | 100 | 101 | 103 | 103 | 103 | 103 | 102 | 101 | 101 | 101 | 100 | 100 | 100 | 102 |
| Sold/Orig LP Diff. % | 98 | 98 | 100 | 102 | 102 | 102 | 102 | 101 | 100 | 100 | 100 | 99 | 99 | 99 | 100 |
| Days on Market | 38 | 39 | 40 | 30 | 25 | 20 | 20 | 19 | 22 | 24 | 27 | 29 | 32 | 40 | 39 |
| Avg CDOM | 41 | 42 | 44 | 34 | 26 | 21 | 21 | 19 | 23 | 26 | 30 | 32 | 34 | 43 | 43 |
| Median | 507 | 492 | 515 | 535 | 536 | 560 | 579 | 550 | 553 | 536 | 556 | 555 | 553 | 535 | 575 |

All reports are published March 2017, based on data available at the end of February 2017, except for the today stats. This representation is based in whole or in part on data supplied by the NWMLS. Neither the Board or its MLS guarantees or is in any way responsible for its accuracy. Data maintained by the Board or its MLS may not reflect all real estate activity in the market. Report reflects activity by all brokers participated in the MLS.

Location: KING COUNTY

Property Types: Single Family Homes - All Property Statuses - All Properties - All Properties

Price Range: \$0 - No Limit

SQFT Range: 0 - No Limit

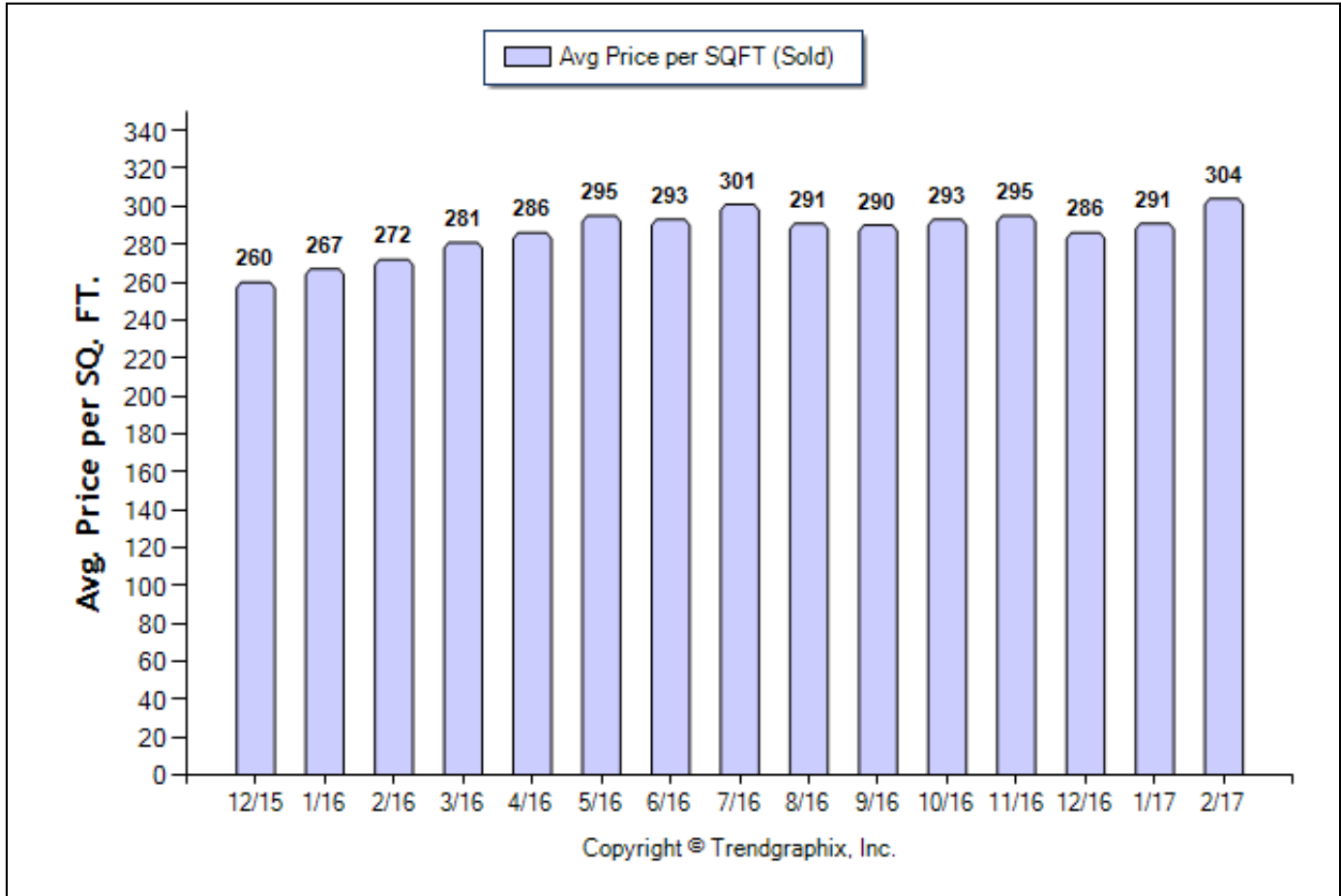
Bedrooms: 0 - No Limit

Full Baths: 0 - No Limit

Half Baths: 0 - No Limit

Year Built: 0 - No Limit

Average Price per SQFT (Sold) (Dec. 2015 - Feb. 2017)



| | Curnt vs. Prev Month | | | Curnt vs. Same Month 1 Yr Ago | | | Curnt vs. Same Qtr 1 Yr Ago | | | TODAY STATS | | |
|---------------------------|----------------------|---------|----------|-------------------------------|---------|----------|-----------------------------|--------------------|----------|----------------------|----------------------|----------|
| | Feb. 17 | Jan. 17 | % Change | Feb. 17 | Feb. 16 | % Change | Dec. 16 to Feb. 17 | Dec. 15 to Feb. 16 | % Change | 3/1/2017 - 3/13/2017 | 2/1/2017 - 2/13/2017 | % Change |
| Avg. Sq. Ft. Price (Sold) | 304 | 291 | 4.5% ▲ | 304 | 272 | 11.8% ▲ | 292.41 | 265.4 | 10.2% ▲ | 315 | 291 | 8.2% ▲ |

| Date | 12/15 | 1/16 | 2/16 | 3/16 | 4/16 | 5/16 | 6/16 | 7/16 | 8/16 | 9/16 | 10/16 | 11/16 | 12/16 | 1/17 | 2/17 |
|------------------------------------|-------|------|------|-------|-------|------|------|------|------|------|-------|-------|-------|-------|-------|
| For Sale | 1899 | 2011 | 2006 | 2108 | 2603 | 2737 | 3241 | 3581 | 3521 | 3743 | 3154 | 2362 | 1776 | 1614 | 1485 |
| New Listing | 1059 | 1871 | 2130 | 3033 | 3418 | 3555 | 3877 | 3577 | 3188 | 3229 | 2242 | 1582 | 1055 | 1784 | 1907 |
| Sold | 2053 | 1200 | 1388 | 2060 | 2239 | 2612 | 3078 | 2795 | 2889 | 2585 | 2490 | 2262 | 2193 | 1557 | 1403 |
| Pended | 1169 | 1535 | 1931 | 2504 | 2618 | 3039 | 2918 | 2691 | 2709 | 2400 | 2317 | 1837 | 1371 | 1690 | 1900 |
| Months of Inventory (Closed Sales) | 0.9 | 1.7 | 1.4 | 1 | 1.2 | 1 | 1.1 | 1.3 | 1.2 | 1.4 | 1.3 | 1 | 0.8 | 1 | 1.1 |
| Months of Inventory (Pended Sales) | 1.6 | 1.3 | 1 | 0.8 | 1 | 0.9 | 1.1 | 1.3 | 1.3 | 1.6 | 1.4 | 1.3 | 1.3 | 1 | 0.8 |
| Absorption Rate (Closed Sales) % | 108.1 | 59.7 | 69.2 | 97.7 | 86 | 95.4 | 95 | 78.1 | 82.1 | 69.1 | 78.9 | 95.8 | 123.5 | 96.5 | 94.5 |
| Absorption Rate (Pended Sales) % | 61.6 | 76.3 | 96.3 | 118.8 | 100.6 | 111 | 90 | 75.1 | 76.9 | 64.1 | 73.5 | 77.8 | 77.2 | 104.7 | 127.9 |
| Avg. Active Price | 984 | 1002 | 1049 | 1111 | 1057 | 1111 | 1074 | 1029 | 1016 | 1002 | 1035 | 1091 | 1148 | 1191 | 1291 |
| Avg. Sold Price | 599 | 601 | 621 | 638 | 640 | 668 | 669 | 676 | 656 | 645 | 665 | 664 | 656 | 647 | 694 |
| Avg. Sq. Ft. Price (Sold) | 260 | 267 | 272 | 281 | 286 | 295 | 293 | 301 | 291 | 290 | 293 | 295 | 286 | 291 | 304 |
| Sold/List Diff. % | 100 | 100 | 101 | 103 | 103 | 103 | 103 | 102 | 101 | 101 | 101 | 100 | 100 | 100 | 102 |
| Sold/Orig LP Diff. % | 98 | 98 | 100 | 102 | 102 | 102 | 102 | 101 | 100 | 100 | 100 | 99 | 99 | 99 | 100 |
| Days on Market | 38 | 39 | 40 | 30 | 25 | 20 | 20 | 19 | 22 | 24 | 27 | 29 | 32 | 40 | 39 |
| Avg CDOM | 41 | 42 | 44 | 34 | 26 | 21 | 21 | 19 | 23 | 26 | 30 | 32 | 34 | 43 | 43 |
| Median | 507 | 492 | 515 | 535 | 536 | 560 | 579 | 550 | 553 | 536 | 556 | 555 | 553 | 535 | 575 |

All reports are published March 2017, based on data available at the end of February 2017, except for the today stats. This representation is based in whole or in part on data supplied by the NWMLS. Neither the Board or its MLS guarantees or is in any way responsible for its accuracy. Data maintained by the Board or its MLS may not reflect all real estate activity in the market. Report reflects activity by all brokers participated in the MLS.

Location: KING COUNTY

Property Types: Single Family Homes - All Property Statuses - All Properties - All Properties

Price Range: \$0 - No Limit

SQFT Range: 0 - No Limit

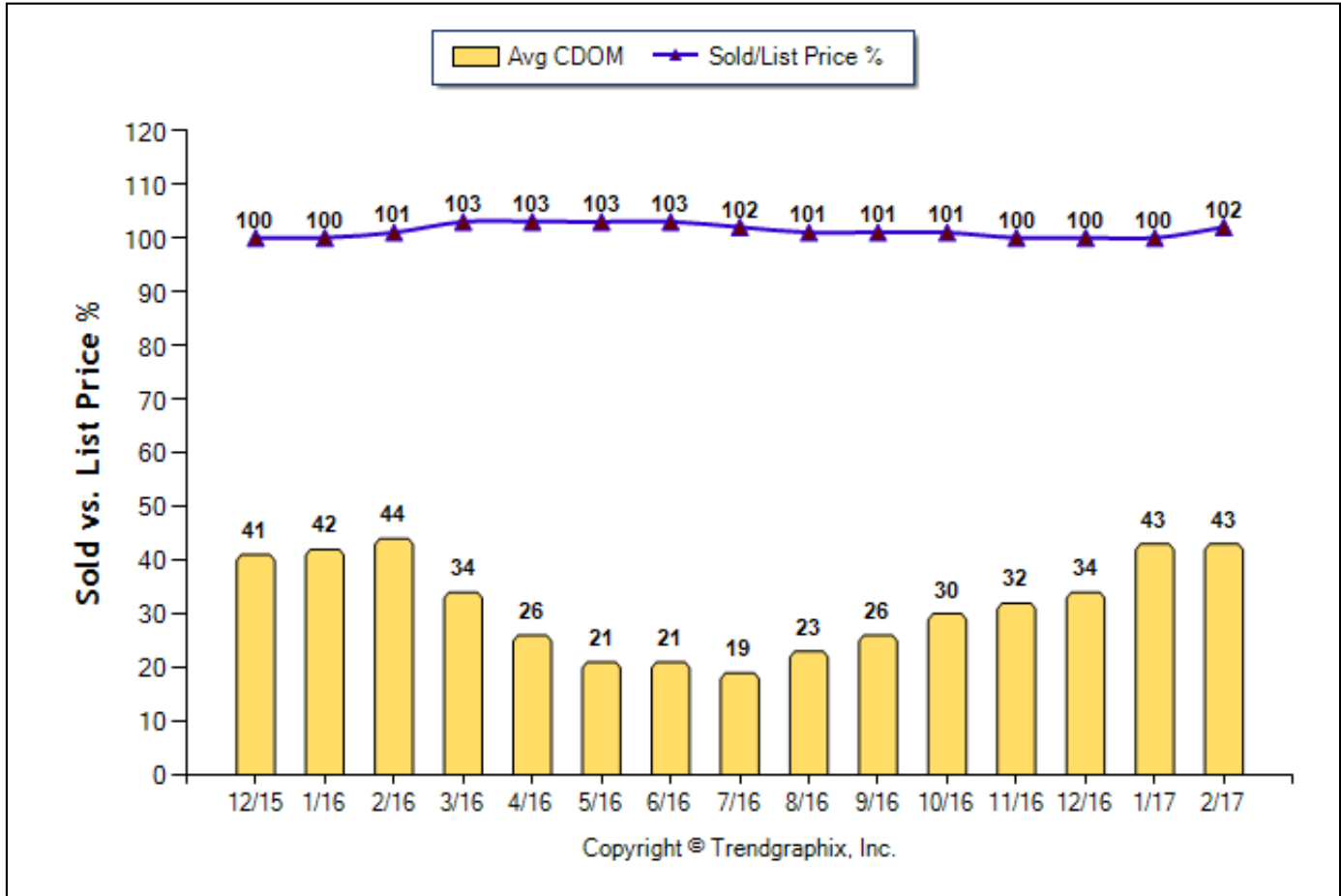
Bedrooms: 0 - No Limit

Full Baths: 0 - No Limit

Half Baths: 0 - No Limit

Year Built: 0 - No Limit

Avg CDOM & Sold/List Price % (Dec. 2015 - Feb. 2017)



| | Curnt vs. Prev Month | | | Curnt vs. Same Month 1 Yr Ago | | | Curnt vs. Same Qtr 1 Yr Ago | | | TODAY STATS | | |
|-------------------|----------------------|---------|----------|-------------------------------|---------|----------|-----------------------------|--------------------|----------|----------------------|----------------------|----------|
| | Feb. 17 | Jan. 17 | % Change | Feb. 17 | Feb. 16 | % Change | Dec. 16 to Feb. 17 | Dec. 15 to Feb. 16 | % Change | 3/1/2017 - 3/13/2017 | 2/1/2017 - 2/13/2017 | % Change |
| Avg CDOM | 43 | 43 | 0% | 43 | 44 | -2.3% ▼ | 39 | 42 | -7.1% ▼ | 36 | 48 | -25% ▼ |
| Sold/List Diff. % | 102 | 100 | 2% ▲ | 102 | 101 | 1% ▲ | 101 | 100 | 1% ▲ | 103 | 102 | 1% ▲ |

| Date | 12/15 | 1/16 | 2/16 | 3/16 | 4/16 | 5/16 | 6/16 | 7/16 | 8/16 | 9/16 | 10/16 | 11/16 | 12/16 | 1/17 | 2/17 |
|---|-------|------|------|-------|-------|------|------|------|------|------|-------|-------|-------|-------|-------|
| For Sale | 1899 | 2011 | 2006 | 2108 | 2603 | 2737 | 3241 | 3581 | 3521 | 3743 | 3154 | 2362 | 1776 | 1614 | 1485 |
| New Listing | 1059 | 1871 | 2130 | 3033 | 3418 | 3555 | 3877 | 3577 | 3188 | 3229 | 2242 | 1582 | 1055 | 1784 | 1907 |
| Sold | 2053 | 1200 | 1388 | 2060 | 2239 | 2612 | 3078 | 2795 | 2889 | 2585 | 2490 | 2262 | 2193 | 1557 | 1403 |
| Pended | 1169 | 1535 | 1931 | 2504 | 2618 | 3039 | 2918 | 2691 | 2709 | 2400 | 2317 | 1837 | 1371 | 1690 | 1900 |
| Months of Inventory (Closed Sales) | 0.9 | 1.7 | 1.4 | 1 | 1.2 | 1 | 1.1 | 1.3 | 1.2 | 1.4 | 1.3 | 1 | 0.8 | 1 | 1.1 |
| Months of Inventory (Pended Sales) | 1.6 | 1.3 | 1 | 0.8 | 1 | 0.9 | 1.1 | 1.3 | 1.3 | 1.6 | 1.4 | 1.3 | 1.3 | 1 | 0.8 |
| Absorption Rate (Closed Sales) % | 108.1 | 59.7 | 69.2 | 97.7 | 86 | 95.4 | 95 | 78.1 | 82.1 | 69.1 | 78.9 | 95.8 | 123.5 | 96.5 | 94.5 |
| Absorption Rate (Pended Sales) % | 61.6 | 76.3 | 96.3 | 118.8 | 100.6 | 111 | 90 | 75.1 | 76.9 | 64.1 | 73.5 | 77.8 | 77.2 | 104.7 | 127.9 |
| Avg. Active Price | 984 | 1002 | 1049 | 1111 | 1057 | 1111 | 1074 | 1029 | 1016 | 1002 | 1035 | 1091 | 1148 | 1191 | 1291 |
| Avg. Sold Price | 599 | 601 | 621 | 638 | 640 | 668 | 669 | 676 | 656 | 645 | 665 | 664 | 656 | 647 | 694 |
| Avg. Sq. Ft. Price (Sold) | 260 | 267 | 272 | 281 | 286 | 295 | 293 | 301 | 291 | 290 | 293 | 295 | 286 | 291 | 304 |
| Sold/List Diff. % | 100 | 100 | 101 | 103 | 103 | 103 | 103 | 102 | 101 | 101 | 101 | 100 | 100 | 100 | 102 |
| Sold/Orig LP Diff. % | 98 | 98 | 100 | 102 | 102 | 102 | 102 | 101 | 100 | 100 | 100 | 99 | 99 | 99 | 100 |
| Days on Market | 38 | 39 | 40 | 30 | 25 | 20 | 20 | 19 | 22 | 24 | 27 | 29 | 32 | 40 | 39 |
| Avg CDOM | 41 | 42 | 44 | 34 | 26 | 21 | 21 | 19 | 23 | 26 | 30 | 32 | 34 | 43 | 43 |
| Median | 507 | 492 | 515 | 535 | 536 | 560 | 579 | 550 | 553 | 536 | 556 | 555 | 553 | 535 | 575 |

All reports are published March 2017, based on data available at the end of February 2017, except for the today stats. This representation is based in whole or in part on data supplied by the NWMLS. Neither the Board or its MLS guarantees or is in any way responsible for its accuracy. Data maintained by the Board or its MLS may not reflect all real estate activity in the market. Report reflects activity by all brokers participated in the MLS.

Location: KING COUNTY

Property Types: Single Family Homes - All Property Statuses - All Properties - All Properties

Price Range: \$0 - No Limit

SQFT Range: 0 - No Limit

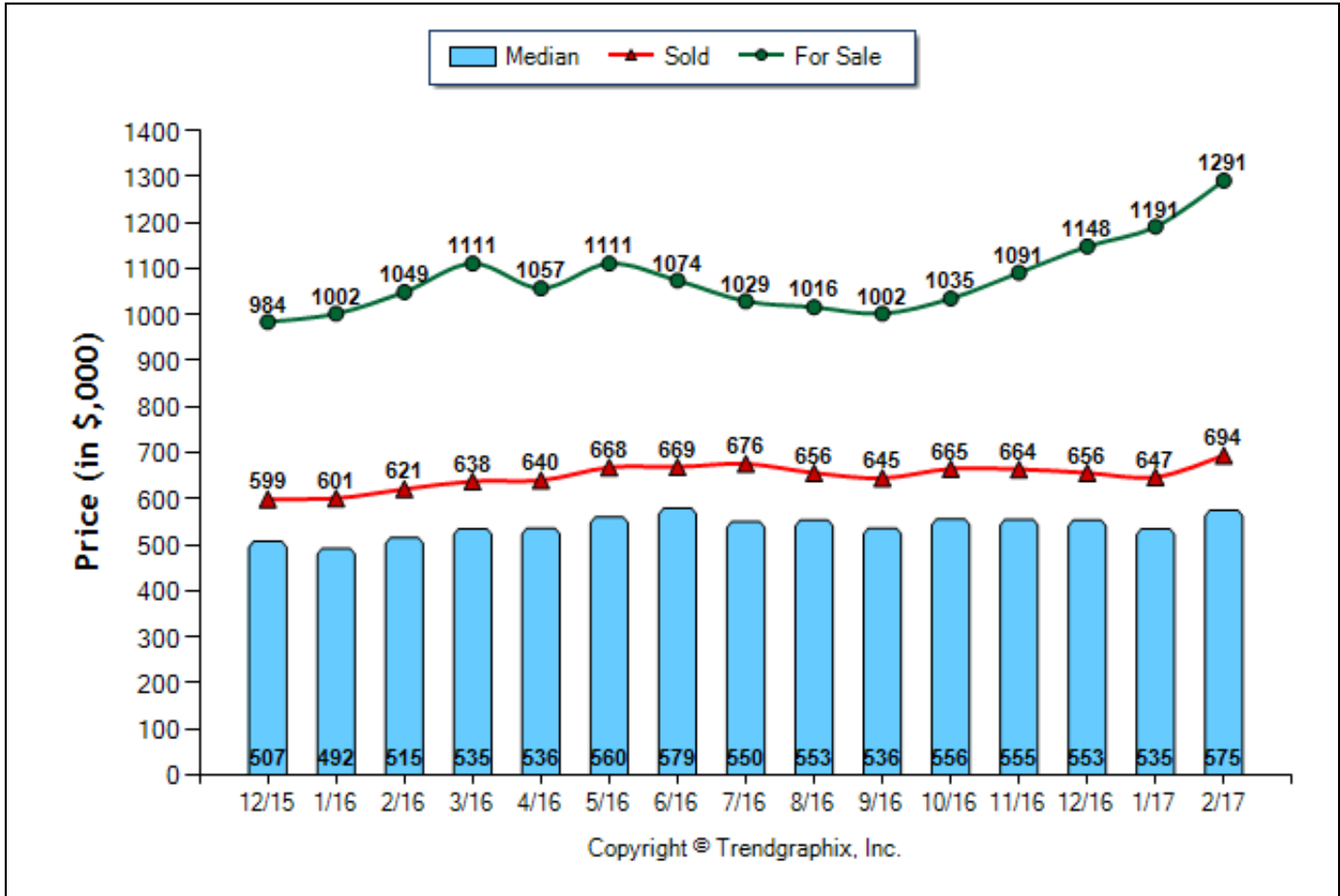
Bedrooms: 0 - No Limit

Full Baths: 0 - No Limit

Half Baths: 0 - No Limit

Year Built: 0 - No Limit

Avg Prices & Median Price (Dec. 2015 - Feb. 2017)



Copyright © Trendgraphix, Inc.

| | Curnt vs. Prev Month | | | Curnt vs. Same Month 1 Yr Ago | | | Curnt vs. Same Qtr 1 Yr Ago | | | TODAY STATS | | |
|-------------------|----------------------|---------|----------|-------------------------------|---------|----------|-----------------------------|--------------------|----------|----------------------|----------------------|----------|
| | Feb. 17 | Jan. 17 | % Change | Feb. 17 | Feb. 16 | % Change | Dec. 16 to Feb. 17 | Dec. 15 to Feb. 16 | % Change | 3/1/2017 - 3/13/2017 | 2/1/2017 - 2/13/2017 | % Change |
| Median | 575 | 535 | 7.5% ▲ | 575 | 515 | 11.7% ▲ | 552 | 504 | 9.5% ▲ | 615 | 553 | 11.2% ▲ |
| Avg. Active Price | 1291 | 1191 | 8.4% ▲ | 1291 | 1049 | 23.1% ▲ | 1206 | 1012 | 19.2% ▲ | 1271 | 1260 | 0.9% ▲ |
| Avg. Sold Price | 694 | 647 | 7.3% ▲ | 694 | 621 | 11.8% ▲ | 664 | 606 | 9.6% ▲ | 717 | 669 | 7.2% ▲ |

| Date | 12/15 | 1/16 | 2/16 | 3/16 | 4/16 | 5/16 | 6/16 | 7/16 | 8/16 | 9/16 | 10/16 | 11/16 | 12/16 | 1/17 | 2/17 |
|------------------------------------|-------|------|------|-------|-------|------|------|------|------|------|-------|-------|-------|-------|-------|
| For Sale | 1899 | 2011 | 2006 | 2108 | 2603 | 2737 | 3241 | 3581 | 3521 | 3743 | 3154 | 2362 | 1776 | 1614 | 1485 |
| New Listing | 1059 | 1871 | 2130 | 3033 | 3418 | 3555 | 3877 | 3577 | 3188 | 3229 | 2242 | 1582 | 1055 | 1784 | 1907 |
| Sold | 2053 | 1200 | 1388 | 2060 | 2239 | 2612 | 3078 | 2795 | 2889 | 2585 | 2490 | 2262 | 2193 | 1557 | 1403 |
| Pended | 1169 | 1535 | 1931 | 2504 | 2618 | 3039 | 2918 | 2691 | 2709 | 2400 | 2317 | 1837 | 1371 | 1690 | 1900 |
| Months of Inventory (Closed Sales) | 0.9 | 1.7 | 1.4 | 1 | 1.2 | 1 | 1.1 | 1.3 | 1.2 | 1.4 | 1.3 | 1 | 0.8 | 1 | 1.1 |
| Months of Inventory (Pended Sales) | 1.6 | 1.3 | 1 | 0.8 | 1 | 0.9 | 1.1 | 1.3 | 1.3 | 1.6 | 1.4 | 1.3 | 1 | 0.8 | 0.8 |
| Absorption Rate (Closed Sales) % | 108.1 | 59.7 | 69.2 | 97.7 | 86 | 95.4 | 95 | 78.1 | 82.1 | 69.1 | 78.9 | 95.8 | 123.5 | 96.5 | 94.5 |
| Absorption Rate (Pended Sales) % | 61.6 | 76.3 | 96.3 | 118.8 | 100.6 | 111 | 90 | 75.1 | 76.9 | 64.1 | 73.5 | 77.8 | 77.2 | 104.7 | 127.9 |
| Avg. Active Price | 984 | 1002 | 1049 | 1111 | 1057 | 1111 | 1074 | 1029 | 1016 | 1002 | 1035 | 1091 | 1148 | 1191 | 1291 |
| Avg. Sold Price | 599 | 601 | 621 | 638 | 640 | 668 | 669 | 676 | 656 | 645 | 665 | 664 | 656 | 647 | 694 |
| Avg. Sq. Ft. Price (Sold) | 260 | 267 | 272 | 281 | 286 | 295 | 293 | 301 | 291 | 290 | 293 | 295 | 286 | 291 | 304 |
| Sold/List Diff. % | 100 | 100 | 101 | 103 | 103 | 103 | 103 | 102 | 101 | 101 | 101 | 100 | 100 | 100 | 102 |
| Sold/Orig LP Diff. % | 98 | 98 | 100 | 102 | 102 | 102 | 102 | 101 | 100 | 100 | 100 | 99 | 99 | 99 | 100 |
| Days on Market | 38 | 39 | 40 | 30 | 25 | 20 | 20 | 19 | 22 | 24 | 27 | 29 | 32 | 40 | 39 |
| Avg CDOM | 41 | 42 | 44 | 34 | 26 | 21 | 21 | 19 | 23 | 26 | 30 | 32 | 34 | 43 | 43 |
| Median | 507 | 492 | 515 | 535 | 536 | 560 | 579 | 550 | 553 | 536 | 556 | 555 | 553 | 535 | 575 |

All reports are published March 2017, based on data available at the end of February 2017, except for the today stats. This representation is based in whole or in part on data supplied by the NWMLS. Neither the Board or its MLS guarantees or is in any way responsible for its accuracy. Data maintained by the Board or its MLS may not reflect all real estate activity in the market. Report reflects activity by all brokers participated in the MLS.

Location: KING COUNTY

Property Types: Single Family Homes - All Property Statuses - All Properties - All Properties

Price Range: \$0 - No Limit

SQFT Range: 0 - No Limit

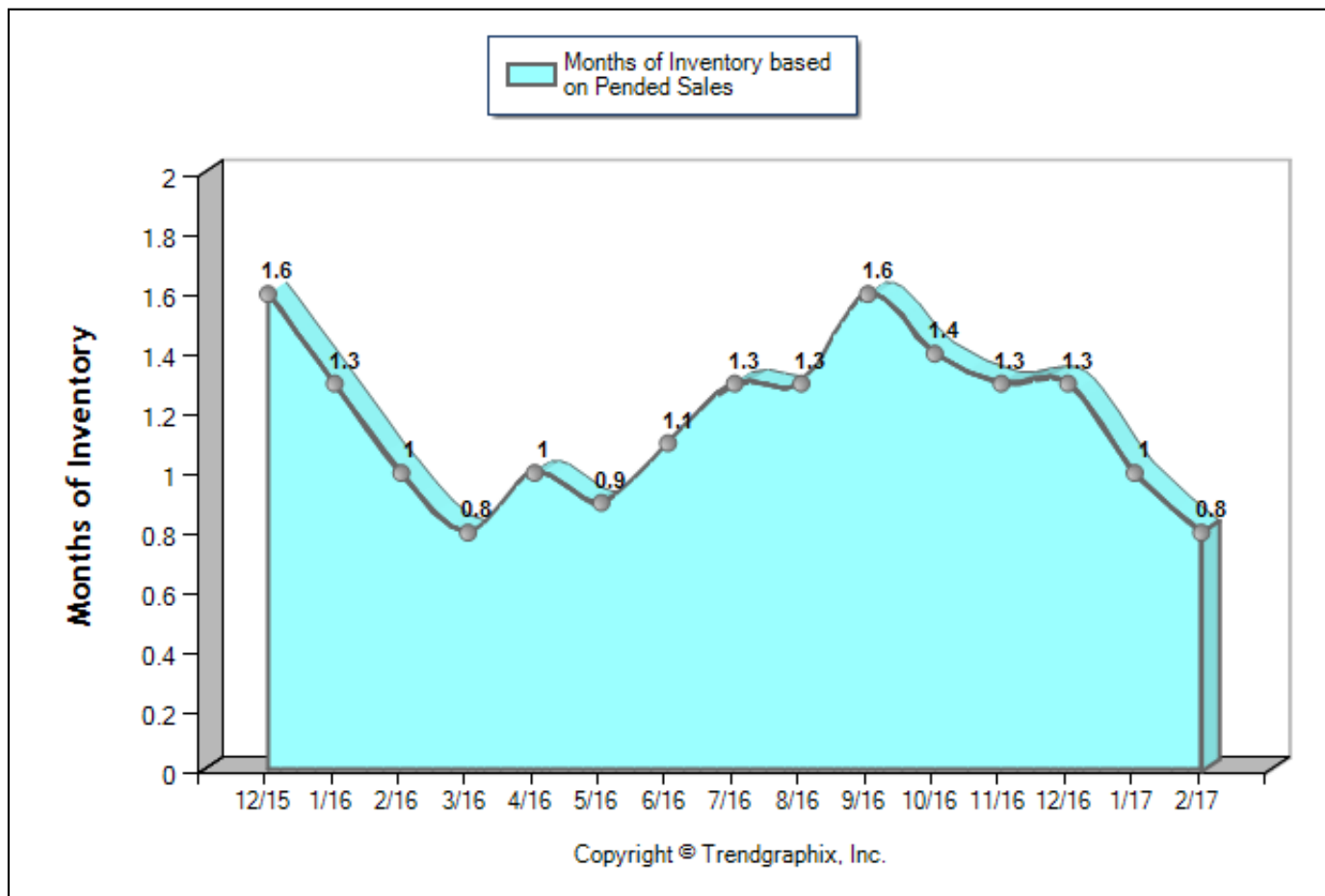
Bedrooms: 0 - No Limit

Full Baths: 0 - No Limit

Half Baths: 0 - No Limit

Year Built: 0 - No Limit

Months of Inventory Based on Pended Sales (Dec. 2015 - Feb. 2017)



| | Curnt vs. Prev Month | | | Curnt vs. Same Month 1 Yr Ago | | | Curnt vs. Same Qtr 1 Yr Ago | | | TODAY STATS | | |
|------------------------------------|----------------------|---------|----------|-------------------------------|---------|----------|-----------------------------|--------------------|----------|----------------------|----------------------|----------|
| | Feb. 17 | Jan. 17 | % Change | Feb. 17 | Feb. 16 | % Change | Dec. 16 to Feb. 17 | Dec. 15 to Feb. 16 | % Change | 3/1/2017 - 3/13/2017 | 2/1/2017 - 2/13/2017 | % Change |
| Months of Inventory (Pended Sales) | 0.8 | 1 | -20.9% ▼ | 0.8 | 1 | -19.3% ▼ | 1 | 1.3 | -22.7% ▼ | 1.6 | 1.8 | -11.2% ▼ |

| Date | 12/15 | 1/16 | 2/16 | 3/16 | 4/16 | 5/16 | 6/16 | 7/16 | 8/16 | 9/16 | 10/16 | 11/16 | 12/16 | 1/17 | 2/17 |
|------------------------------------|-------|------|------|-------|-------|------|------|------|------|------|-------|-------|-------|-------|-------|
| For Sale | 1899 | 2011 | 2006 | 2108 | 2603 | 2737 | 3241 | 3581 | 3521 | 3743 | 3154 | 2362 | 1776 | 1614 | 1485 |
| New Listing | 1059 | 1871 | 2130 | 3033 | 3418 | 3555 | 3877 | 3577 | 3188 | 3229 | 2242 | 1582 | 1055 | 1784 | 1907 |
| Sold | 2053 | 1200 | 1388 | 2060 | 2239 | 2612 | 3078 | 2795 | 2889 | 2585 | 2490 | 2262 | 2193 | 1557 | 1403 |
| Pended | 1169 | 1535 | 1931 | 2504 | 2618 | 3039 | 2918 | 2691 | 2709 | 2400 | 2317 | 1837 | 1371 | 1690 | 1900 |
| Months of Inventory (Closed Sales) | 0.9 | 1.7 | 1.4 | 1 | 1.2 | 1 | 1.1 | 1.3 | 1.2 | 1.4 | 1.3 | 1 | 0.8 | 1 | 1.1 |
| Months of Inventory (Pended Sales) | 1.6 | 1.3 | 1 | 0.8 | 1 | 0.9 | 1.1 | 1.3 | 1.3 | 1.6 | 1.4 | 1.3 | 1.3 | 1 | 0.8 |
| Absorption Rate (Closed Sales) % | 108.1 | 59.7 | 69.2 | 97.7 | 86 | 95.4 | 95 | 78.1 | 82.1 | 69.1 | 78.9 | 95.8 | 123.5 | 96.5 | 94.5 |
| Absorption Rate (Pended Sales) % | 61.6 | 76.3 | 96.3 | 118.8 | 100.6 | 111 | 90 | 75.1 | 76.9 | 64.1 | 73.5 | 77.8 | 77.2 | 104.7 | 127.9 |
| Avg. Active Price | 984 | 1002 | 1049 | 1111 | 1057 | 1111 | 1074 | 1029 | 1016 | 1002 | 1035 | 1091 | 1148 | 1191 | 1291 |
| Avg. Sold Price | 599 | 601 | 621 | 638 | 640 | 668 | 669 | 676 | 656 | 645 | 665 | 664 | 656 | 647 | 694 |
| Avg. Sq. Ft. Price (Sold) | 260 | 267 | 272 | 281 | 286 | 295 | 293 | 301 | 291 | 290 | 293 | 295 | 286 | 291 | 304 |
| Sold/List Diff. % | 100 | 100 | 101 | 103 | 103 | 103 | 103 | 102 | 101 | 101 | 101 | 100 | 100 | 100 | 102 |
| Sold/Orig LP Diff. % | 98 | 98 | 100 | 102 | 102 | 102 | 102 | 101 | 100 | 100 | 100 | 99 | 99 | 99 | 100 |
| Days on Market | 38 | 39 | 40 | 30 | 25 | 20 | 20 | 19 | 22 | 24 | 27 | 29 | 32 | 40 | 39 |
| Avg CDOM | 41 | 42 | 44 | 34 | 26 | 21 | 21 | 19 | 23 | 26 | 30 | 32 | 34 | 43 | 43 |
| Median | 507 | 492 | 515 | 535 | 536 | 560 | 579 | 550 | 553 | 536 | 556 | 555 | 553 | 535 | 575 |

All reports are published March 2017, based on data available at the end of February 2017, except for the today stats. This representation is based in whole or in part on data supplied by the NWMLS. Neither the Board or its MLS guarantees or is in any way responsible for its accuracy. Data maintained by the Board or its MLS may not reflect all real estate activity in the market. Report reflects activity by all brokers participated in the MLS.